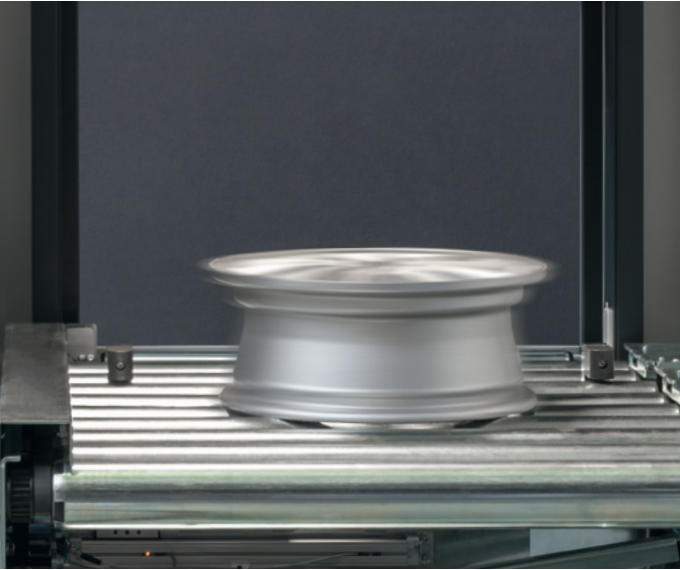


HeiLaser Wheel



DMC LABELING FOR
COMPLETE TRACEABILITY



The forte of every wheel testing facility: DMC marking for perfect quality

Innovations must offer added value. With this in mind we developed the HeiDetect Wheel Robot. The consistent add-on to this is the compact HeiLaser Wheel. It marks wheels by laser, paving the way for simple, individual traceability. DMC marking takes place directly after the X-ray test in your wheel testing facility. All steps are carried out in in-line operation with neutral cycle time. Defective wheels can be marked as such and sorted out later.

DataMatrix code marking (DMC) by laser – individual and in-line

The marking of a wheel with the HeiLaser Wheel takes a maximum of 17 seconds - it thus takes place parallel to the cycle time of the X-ray test. Time is rarely so well invested, because thanks to the individual code, the data of individual workpieces can be clearly assigned. All settings are stored centrally, from the test parameters to DMC. Wheels can always be traced back to the raw casting condition and the corresponding X-ray images. Lasering is done from below through the conveyor system, so the wheel does not have to be moved additionally. This not only saves time, but also the investment in additional components.

The perfect addition to your wheel testing facility

HeiDetect Wheel Robot is the first choice for many world-renowned wheel manufacturers for 100 percent non-destructive testing. This is due to the extremely high throughput rates in in-line operation and the fast, almost pseudo error-free evaluation in real time. HeiLaser Wheel is the logical further development: All wheels are clearly marked in the early stage of the production process - before further processing. The early and unambiguous identification at the beginning of the value chain makes it possible to clearly allocate data across all production processes and beyond.

Your advantages at a glance

- › In-line marking directly after X-ray testing
- › No additional time required: Marking takes place in 17 seconds parallel to cycle time
- › No manual intervention due to complete arrangement of testing and marking
- › Seamless traceability, as wheels are marked sustainably
- › NIO wheels can also be optically visibly marked, eliminating the need for an additional station
- › Space-saving, direct integration in HeiDetect Wheel Robot
- › Reliability, because all high-quality system components are from a single source - from HEITEC
- › Easy operation, because all settings are integrated in one software
- › Maximum information density on the wheel, because even foundry information can still be unambiguously assigned
- › Traceability of all data even after delivery is possible (marking in relief pocket)
- › Can be retrofitted also for existing in-line wheel testing facilities
- › Optimum quality assurance - thanks to integrated counter-reading of the DMC after marking



For more efficiency and quality –
great benefit in the smallest of spaces

If you want to exploit all possibilities of quality assurance through the combination of HeiDetect Wheel Robot and HeiLaser Wheel, you do not have to plan any conversion measures. The compact solution can be connected directly to your wheel testing facility. Thanks to the „backpack solution“, it requires very little space and can be optimally integrated into existing production processes. Whether a new or already existing system is irrelevant, because the HeiLaser Wheel can be retrofitted without any problems.

Technical data

Outline data		Range of parts	
Length	1,200 mm	Wheel diameter	350 - 700 mm
Width	2,750 mm	Wheel width	100 - 385 mm
Height	2,320 mm	Max. weight	50 kg
Weight	2.1 t	DMC labelling	
Ambient temperature	up to 50 °C	Size	10 x 10 mm
		Design	10 x 10 - 18 x 18 field
		Quality (AIM DPM)	B or better

A strong team - the HeiLaser Wheel and the HeiDetect Wheel Robot



HeiLaser Wheel

HeiDetect Wheel Robot

Contact address Europe



FX Solution GmbH

Hauptstr. 56
72469 Meßstetten | Germany
Phone: +49 7431 3060041
info@f-x-solution.com
www.f-x-solution.com

Contact address North and South America, Asia



North and South America:

VJ Group (Corporate Headquarters)

89 Carlough Road, Bohemia, NY 11716 USA
Phone: +1 631 589 8800
info@vjt.com

Asia:

VJ Technologies China (Suzhou) Co., Ltd

Unit 27-D, Suchun Industrial Square
428 Xinglong St. SIP Suzhou, Jiangsu,
China 215021
Phone: 01186-512-6283-1283
www.vjtchina.com

HEITEC PTS GmbH

Hauptstraße 49
73329 Kuchen
Germany

Phone: +49 7331 3046 0
Fax: +49 7331 3046 11
Email: info@heitec-pts.de
Web: www.heitec-pts.de